

20/451 Glebe Point Road GLEBE NSW

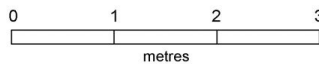
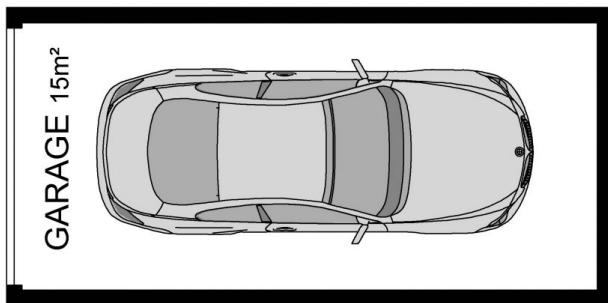
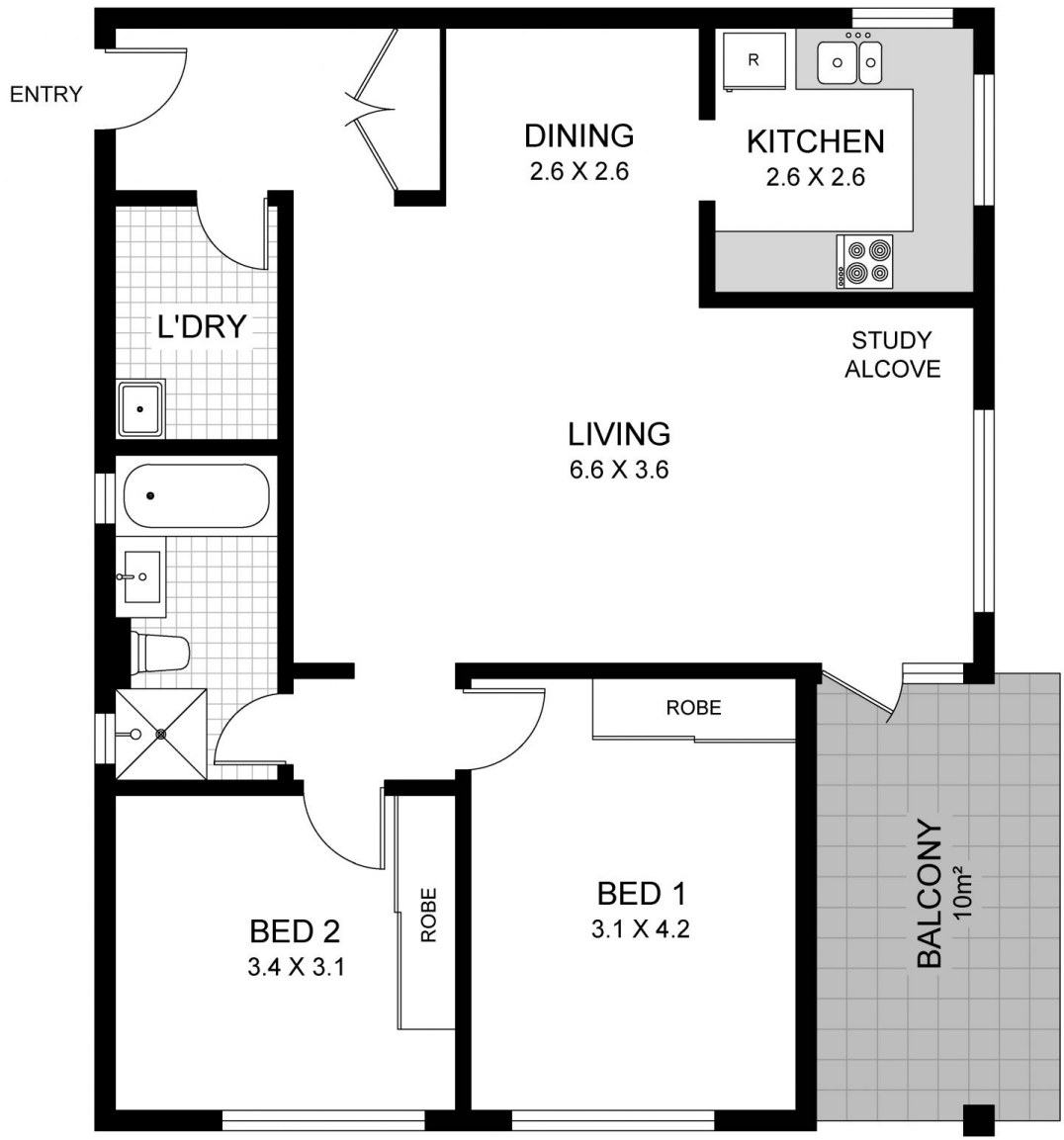
2  1  1 

This generously proportioned two bedroom mid-floor apartment presents a rare opportunity to acquire a substantial home in an enviable Glebe Point setting. The apartment is in the prized "Anchorage" apartments, situated on the foreshore parklands of Blackwattle Bay, offering a fantastic blend of convenience, lifestyle and solid investment prospects in an ever popular locale.

Type : Apartment
Land Size : 107 sqm
View : <https://www.gwre.com.au/8065603>

- * Substantial open living space with dining area
- * Two double bedrooms with built-in robes
- * Large undercover balcony
- * Lock up garage plus separate storage on title
- * Solid low-rise security block
- * Stroll to Tramsheds, Glebe Village, city buses, light rail, extensive parklands, foreshore walk, new Fishmarkets

[For full version visit the website](https://www.gwre.com.au)



This plan is for illustrative purposes only and dimensions are approximate. It does not constitute part of any legal document or commercial contract for the sale or lease of this property.

20/451 GLEBE POINT ROAD
GLEBE