

1 Hanks Street ASHFIELD NSW

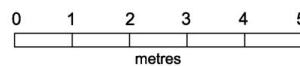
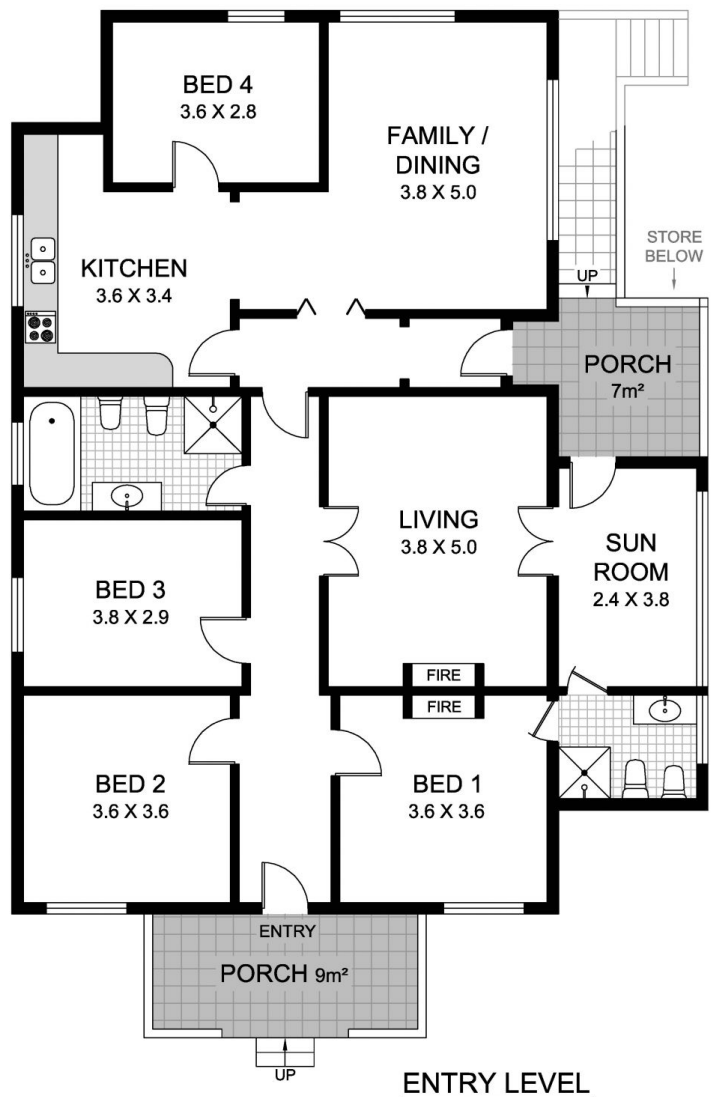
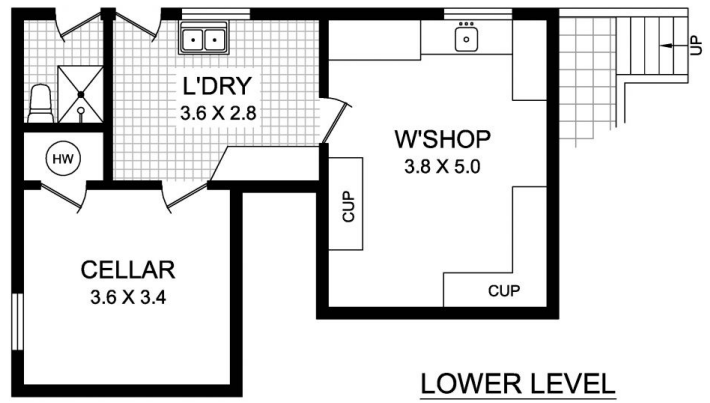
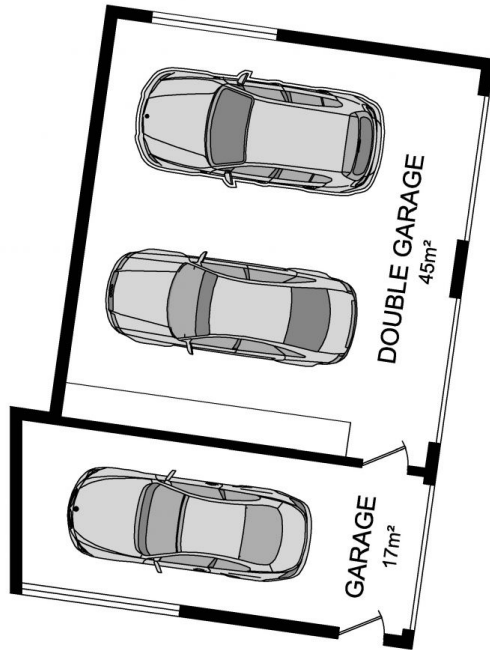
4 2 3

This immaculately presented spacious family home is full of charm, character and enormous potential to create your perfect future family home. Positioned on an over-sized corner block in a superbly convenient and sought after location moments away from Trinity Grammar, Yeo Park, cafes, shops and numerous transport options.

Type : House
Land Size : 688 sqm
View : <https://www.gwre.com.au/8065601>

- * Large north facing 688sqm garden block
- * Solid full brick traditional bungalow with character features and opportunities to expand
- * Flexible floorplan with large bedrooms, eat-in kitchen, formal and informal living spaces
- * Enormous 3 car garage plus possible teen retreat or separate accommodation
- * Extensive under house area for workshop, storage,

[For full version visit the website](https://www.gwre.com.au)



**1 HANKS STREET
ASHFIELD**

This plan is for illustrative purposes only and dimensions are approximate. It does not constitute part of any legal document or commercial contract for the sale or lease of this property.