






16 Alfred Street MARRICKVILLE NSW

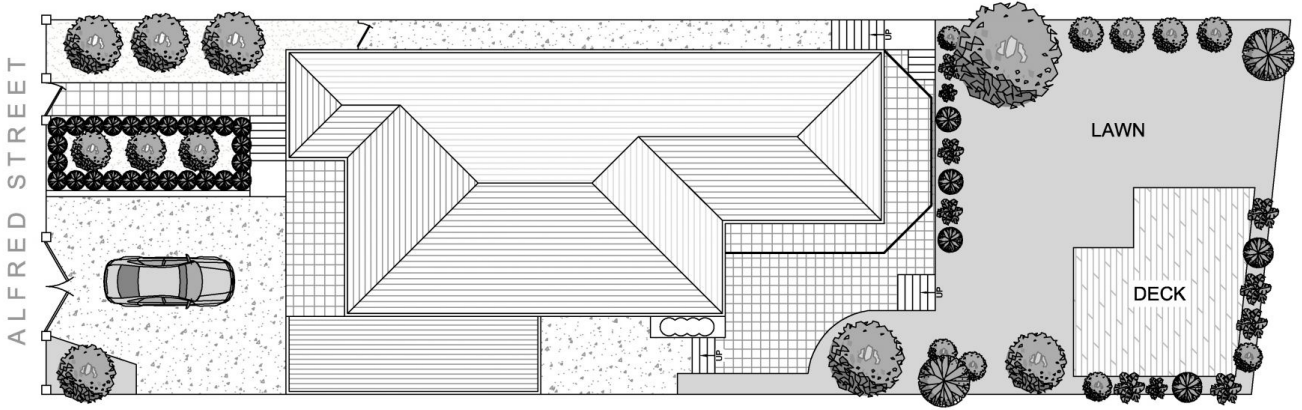
4  2  3 

This immaculately presented family home is situated in a rare and exclusive cul-de-sac location, adjacent to extensive riverside parklands and golf course. Behind the pretty facade are generously proportioned bedrooms, spacious open plan living spaces and a wonderful alfresco entertainers space overlooking the lush private rear garden. This property offers enviable lifestyle options, tranquil surrounds less than 9km from the CBD.

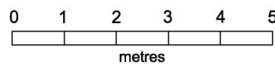
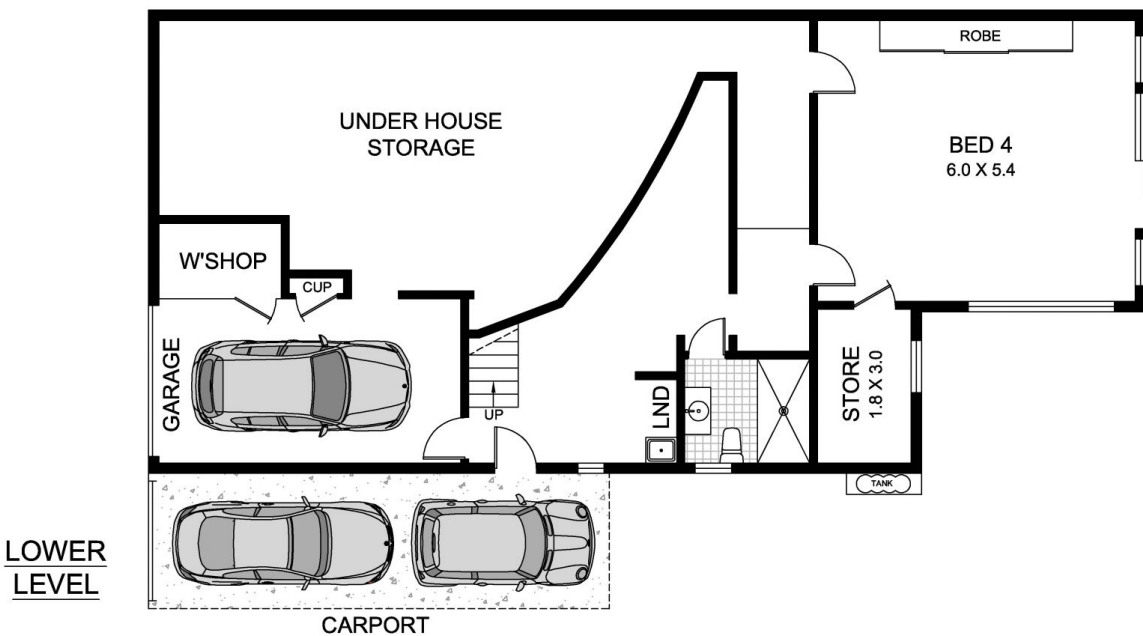
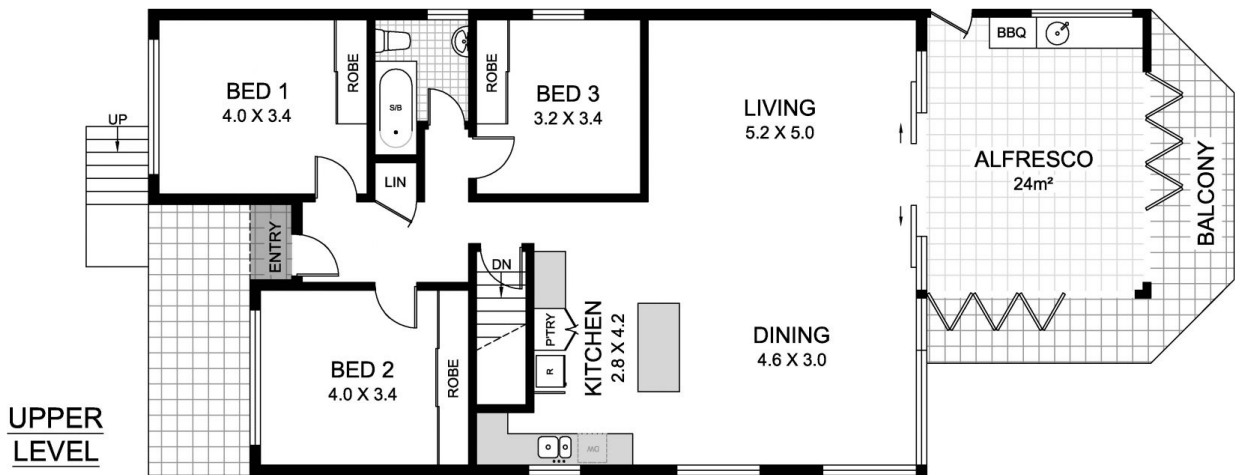
Type : House
Land Size : 499 sqm
View : <https://www.gwre.com.au/8065594>

- * Three generous bedrooms with Built-in robes
- * Enormous fourth bedroom with option to be self contained residence
- * Open light filled living spaces featuring polished timber floors
- * Wonderful entertainers space with a private garden

[For full version visit the website](https://www.gwre.com.au)



SITE PLAN (at reduced scale)



This plan is for illustrative purposes only and dimensions are approximate. It does not constitute part of any legal document or commercial contract for the sale or lease of this property.

**16 ALFRED STREET
MARRICKVILLE**