



59A St Johns Road GLEBE NSW

5  2 

A wide traditional Victorian terrace home of spacious proportions offering family sized accommodation in a vibrant Village setting. This home is immaculately presented throughout, has four double bedrooms plus study and modernised open living spaces leading to a north facing garden courtyard.

Type : House
Land Size : 129 sqm
View : <https://www.gwre.com.au/8065592>

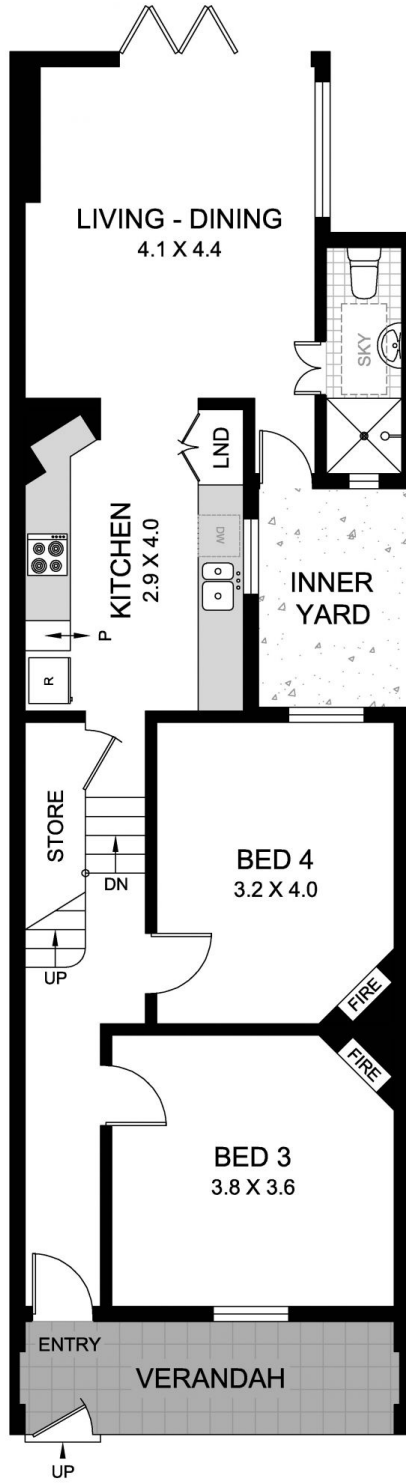
- * Four large double bedrooms plus separate study
- * Polished timber floors, fireplaces, period features
- * Two full bathrooms
- * Instantly livable with potential for future improvements
- * Vibrant village location, stroll to all amenities

- * Fantastic investment potential

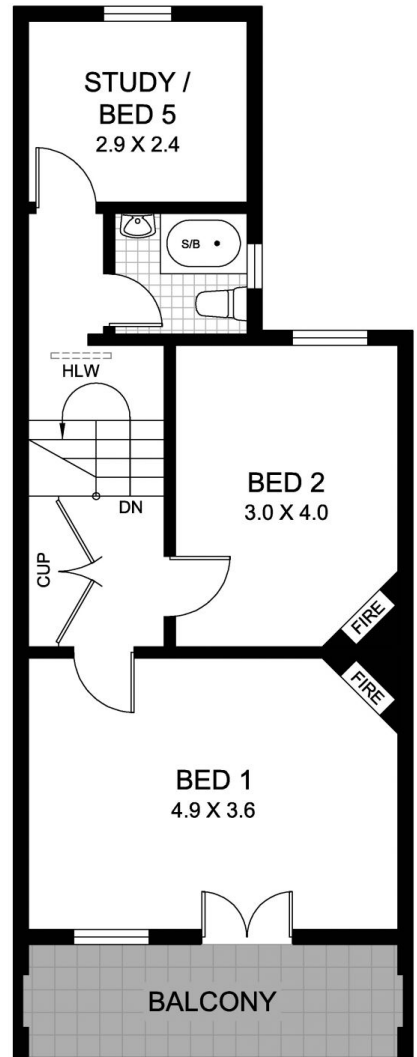
PEDESTRIAN LANE



ST JOHNS ROAD



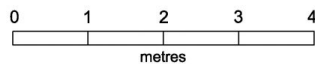
LEVEL 1



LEVEL 2



This plan is for illustrative purposes only and dimensions are approximate. It does not constitute part of any legal document or commercial contract for the sale or lease of this property.



59A ST JOHNS ROAD
GLEBE