



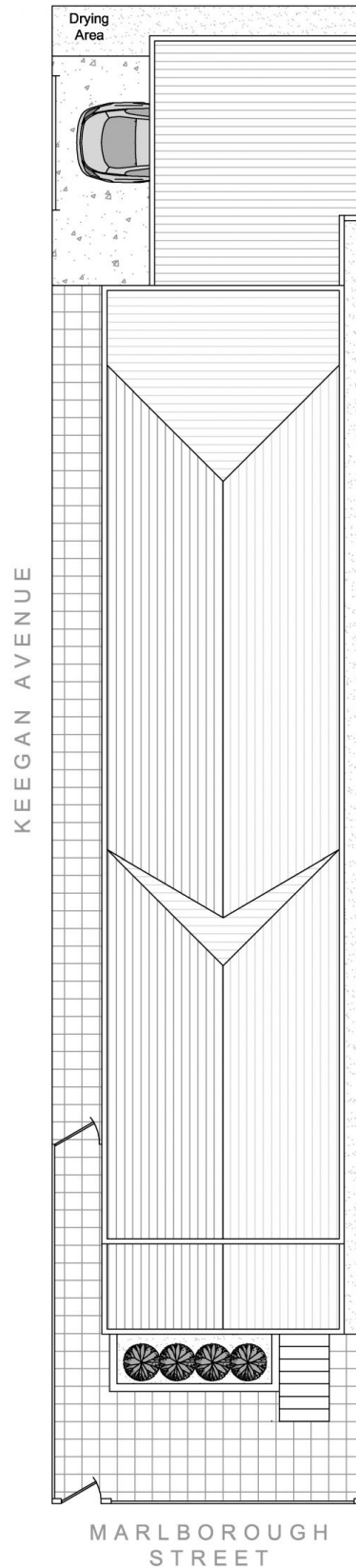
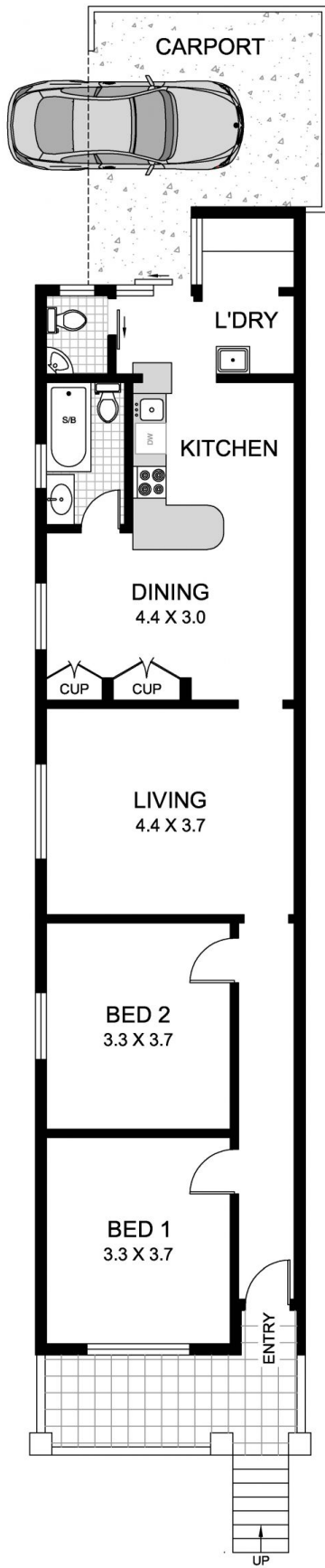
5 Marlborough Street GLEBE NSW

2  1  1 

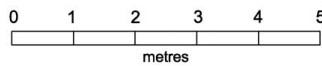
This attractive free-standing 1920s bungalow set on a large 177sqm corner block is being offered for the first time in decades. The property is in good condition features generous proportions, enjoys an ultra-convenient lifestyle location footsteps to village cafes, dining, light-rail and offers excellent future potential to improve, update and create a wonderful designer residence in a sought after setting.

Type : House
Land Size : 177 sqm
View : <https://www.gwre.com.au/8065586>

- *Polished floors and high detailed ceilings throughout
- *Separate lounge and large eat-in gas kitchen
- *Two light filled double bedrooms
- *Rear north facing courtyard with car access
- *Excellent investment and rental potential



SITE PLAN (at reduced scale)



This plan is for illustrative purposes only and dimensions are approximate. It does not constitute part of any legal document or commercial contract for the sale or lease of this property.

**5 MARLBOROUGH STREET
GLEBE**