



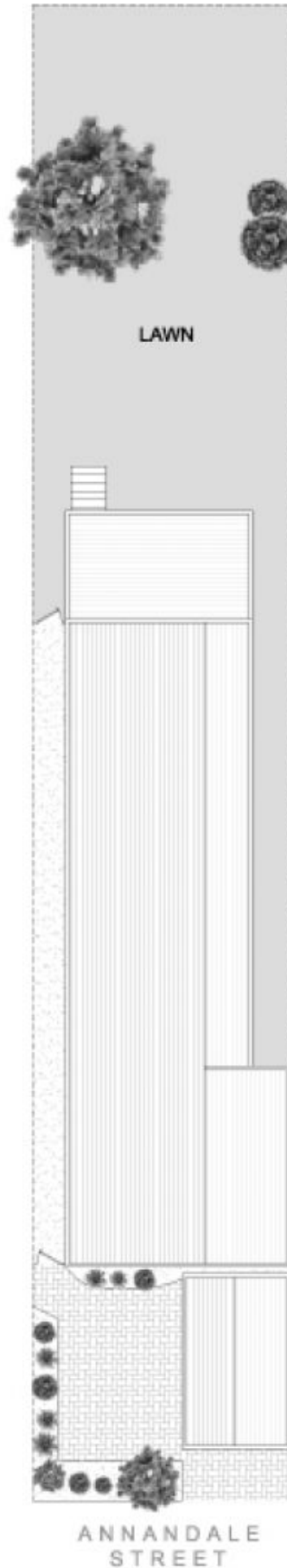
310A Annandale Street ANNANDALE NSW

3  2  1 

Nestled in leafy garden surrounds, this unique freestanding brick home is situated in one of the most prized addresses in North Annandale. Surrounded by quality homes, in a peaceful tree-lined street this property offers enormous potential as a future home or solid investment.

Type : House
Land Size : 345 sqm
View : <https://www.gwre.com.au/8065567>

- * Set on a deep, level, 345sqm block
- * Combined living spaces with polished timber floors
- * Three bedrooms with built-ins, en-suite to main
- * Large entertainment deck overlooking expansive yard
- * Short stroll to cafes, shops, schools and light rail

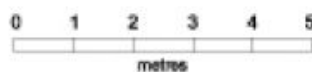


SITE PLAN (at reduced scale)

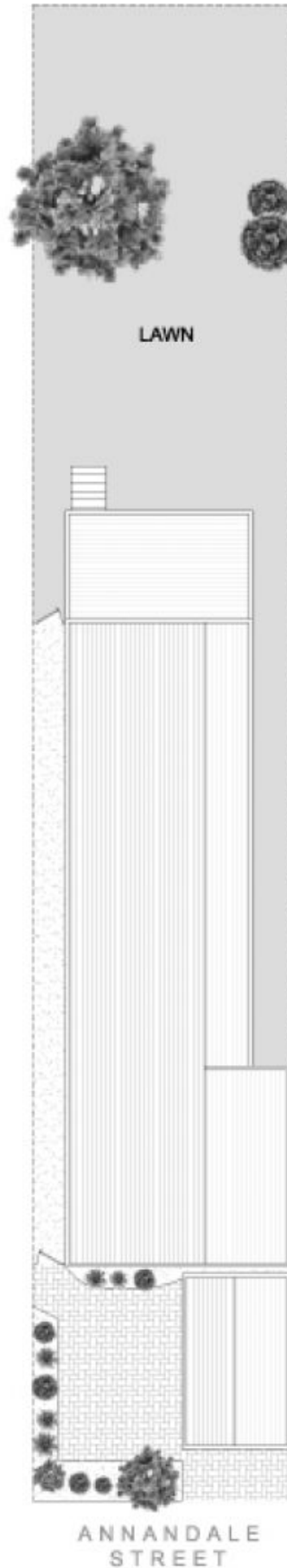
This plan is for illustrative purposes only and dimensions are approximate. It does not constitute part of any legal document or commercial contract for the sale or lease of this property.



METRO FLOORPLANS
0418 223 433



310A ANNANDALE STREET
ANNANDALE

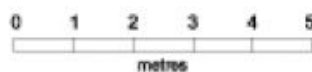


SITE PLAN (at reduced scale)

This plan is for illustrative purposes only and dimensions are approximate. It does not constitute part of any legal document or commercial contract for the sale or lease of this property.



METRO FLOORPLANS
0418 223 433



310A ANNANDALE STREET
ANNANDALE