



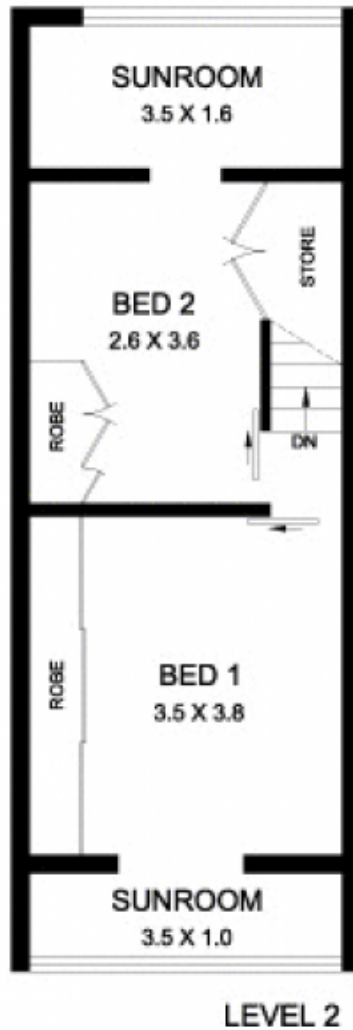
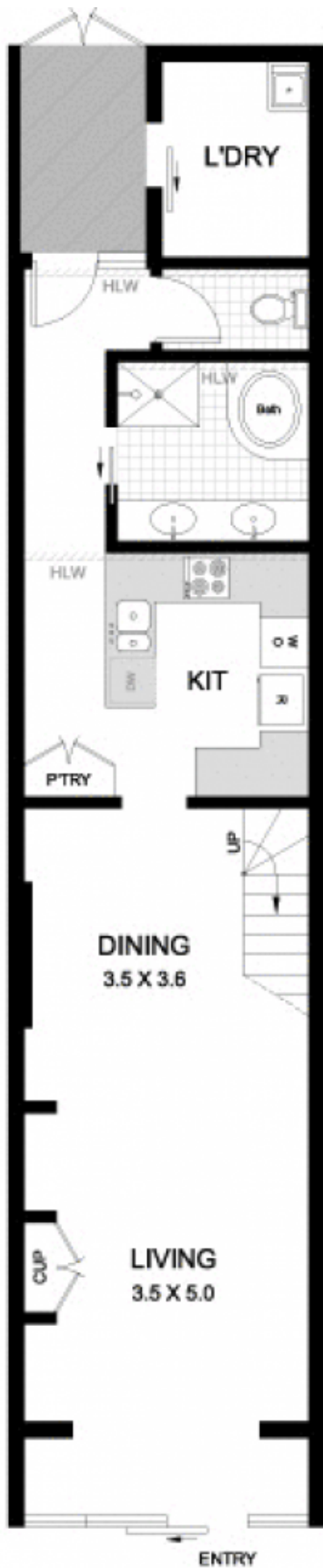
10 Colbourne Street GLEBE NSW

2  1 

Offered for the first time since the 1920s, this sturdy mid-Victorian terrace is instantly liveable and presents a remarkable opportunity to add significant value in a great location. There's plenty of space to work with, the home includes a pool and it enjoys an ultra-convenient setting mere minutes from the city.

Type : House
Land Size : 113 sqm
View : <https://www.gwre.com.au/8065565>

Combined lounge/dining with air conditioning
Neat, functional kitchen including dishwasher
2 dbl beds with b-ins, one has sunroom/study
Private front courtyard plus a pool at the rear
Full bathroom, w/c and laundry both separate
Stroll to cafes, Fish Market, light rail and CBD



10 COLBOURNE STREET

GLEBE

PLANS SHOWN ARE ONLY INDICATIVE OF LAYOUT.
DIMENSIONS ARE APPROXIMATE



METRO FLOORPLANS
0418 223 433



Garry White

FIRST NATIONAL REAL ESTATE