



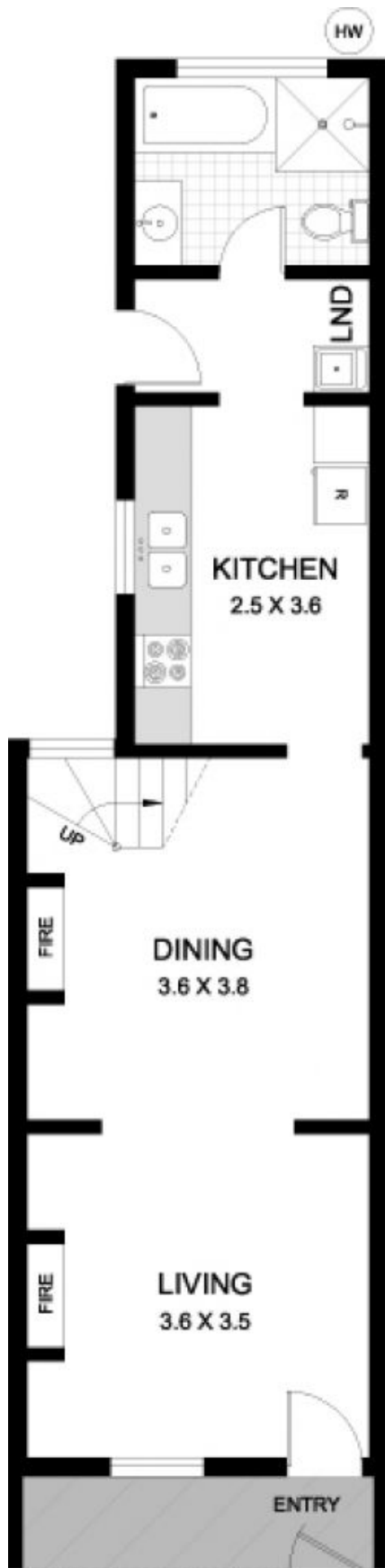
94 Darling Street GLEBE NSW

3 1 1

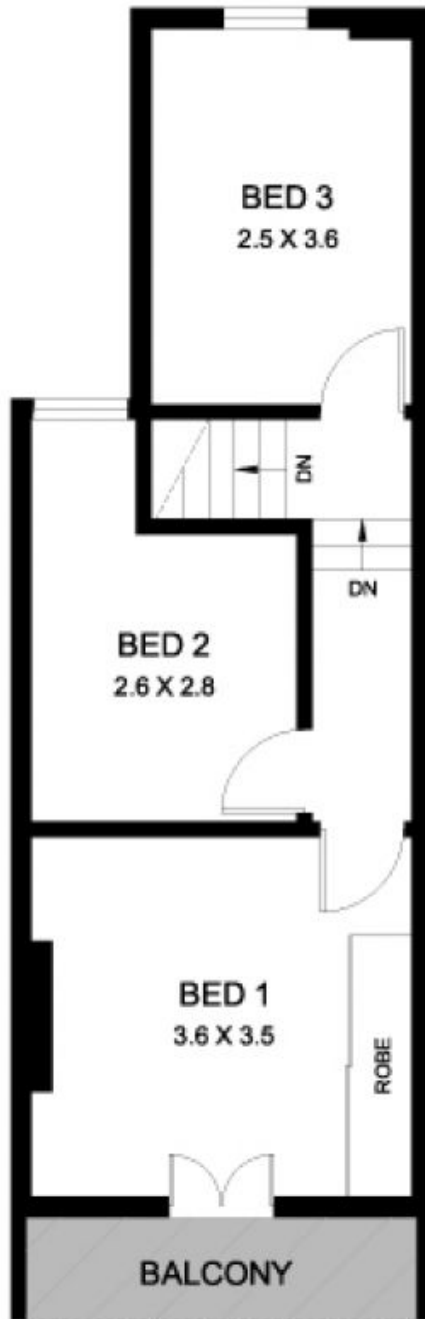
This traditional 2 storey Victorian terrace represents an exceptional opportunity to acquire a three bedroom residence with excellent future potential to improve or update and create a designer residence in a sought after setting. Located at the gateway to the CBD and close to the light rail, it is just a short stroll to extensive parklands, the foreshore walk and Glebe village.

Type : House
Land Size : 100 sqm
View : <https://www.gwre.com.au/8065540>

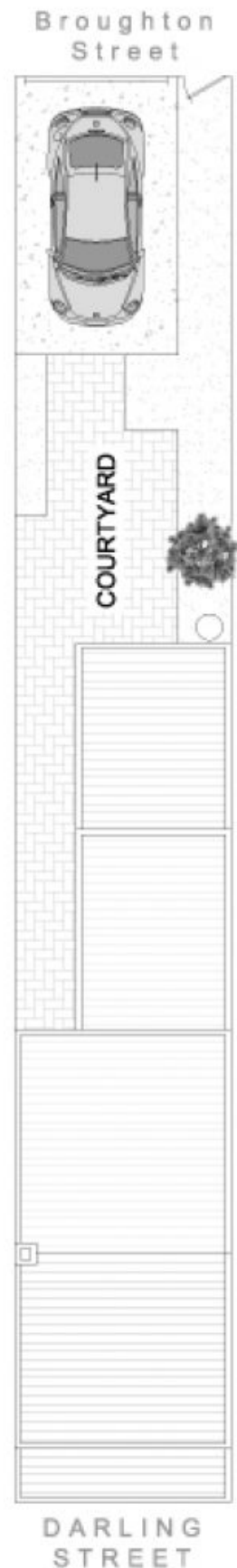
- * Three good sized bedrooms, main with built-in robe and balcony
- * Open plan living areas, functional galley style kitchen
- * Full bathroom with separate laundry
- * Wide rear lane with easy car access
- * Quiet tree-lined street close to all amenities



LEVEL 1



LEVEL 2



SITE PLAN
(at reduced scale)



This plan is for illustrative purposes only and dimensions are approximate. It does not constitute part of any legal document or commercial contract for the sale or lease of this property.