



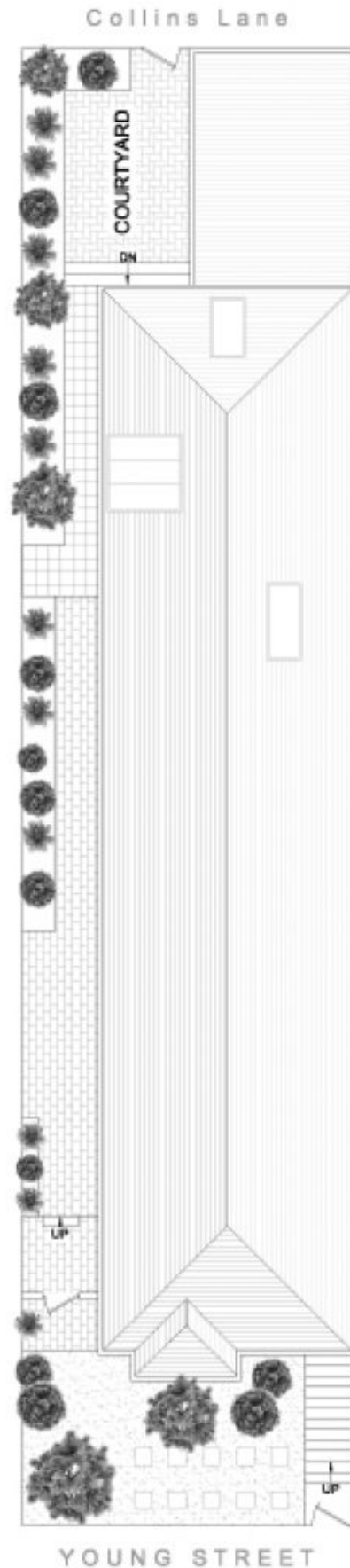
225 Young Street ANNANDALE NSW

3  1  1 

This freestanding character residence represents an excellent buying opportunity for those seeking a large single level home in a premium lifestyle location. The double brick residence sits on an elevated 271sqm block, has rear lane garaging and is situated in a prime village position.

Type : House
Land Size : 271 sqm
View : <https://www.gwre.com.au/8065537>

Lofty ceilings, polished timber floors, marble fireplaces
Separate living and dining, well appointed gas kitchen
Double bedrooms and full bathroom
Sheltered patio and private courtyard garden
Lock-up garage with access from rear lane
Excellent potential to redesign or update



SITE PLAN (at reduced scale)



This plan is for illustrative purposes only and dimensions are approximate. It does not constitute part of any legal document or commercial contract for the sale or lease of this property.