



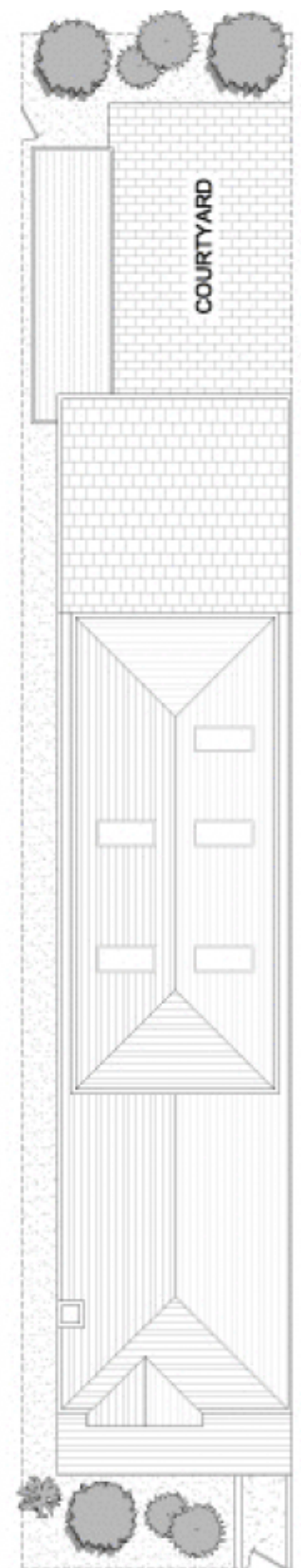
## 1 Forsyth Street GLEBE NSW

5 2

Combining ornate original features with substantial proportions and plenty of natural light, this 208sqm freestanding terrace creates an immensely appealing home that can ably accommodate a large family. The upper level boasts landmark views of the cityscape and Anzac Bridge in its entirety while its location is metres from shops, cafes and the bay.

**Type** : House  
**Land Size** : 208 sqm  
**View** : <https://www.gwre.com.au/8065506>

- \*Charming original facade set on a quiet street
- \*Freshly presented with polished timber floors
- \*Updated rear living area flows to the outdoors
- \*Bi-folds open to a generous entertainers' courtyard
- \*Gas fitted kitchen with stainless steel benches
- \*Traditional fireplace, master balcony, storage



FORSYTH STREET



LEVEL 2



LEVEL 1



1 FORSYTH STREET

GLEBE

PLANS SHOWN ARE ONLY INDICATIVE OF LAYOUT.  
DIMENSIONS ARE APPROXIMATE

0 1 5

SCALE BAR in metres



METRO FLOORPLANS  
0418 223 433



**Garry White**  
FIRST NATIONAL REAL ESTATE