



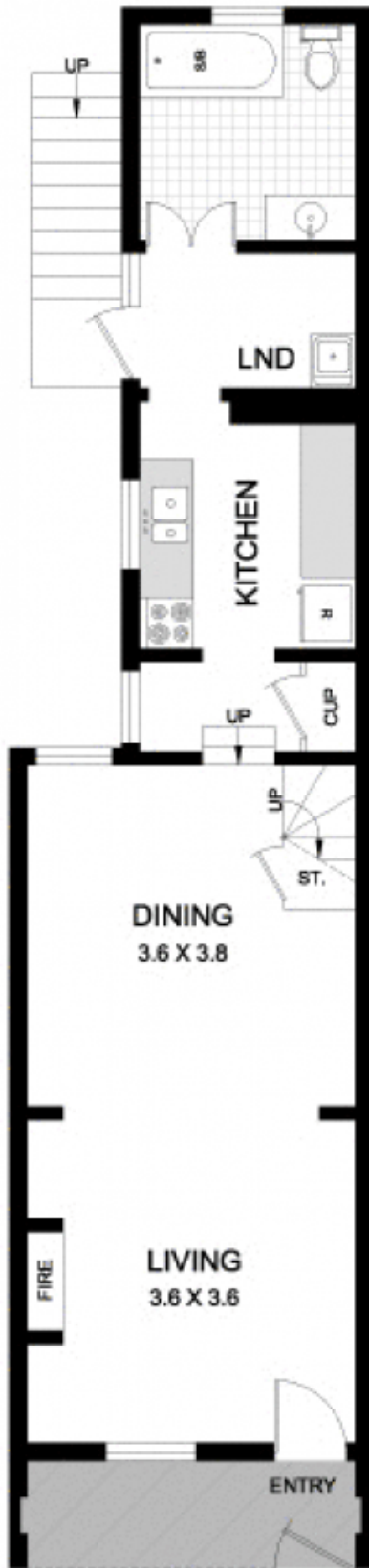
7 Talfourd Street GLEBE NSW

2  1  1 

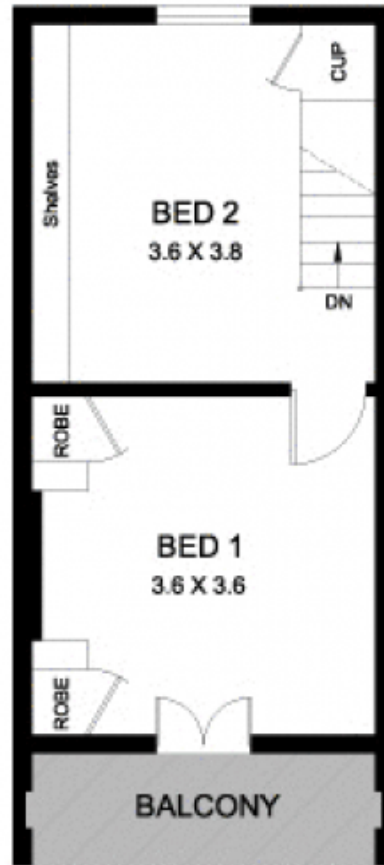
This charming 2 storey inner-city home is nestled in an attractive tree-lined street in the heart of Glebe Village. Behind the pretty Victorian facade is a traditionally proportioned 2 bedroom terrace with enormous potential to modernise and create a future home.

Type : House
Land Size : 94.8 sqm
View : <https://www.gwre.com.au/8065503>

- Light filled open plan living spaces
- Two generous bedrooms, main with balcony
- Leafy garden courtyard with rear lane car access
- Stroll to Glebe Village and numerous transport options

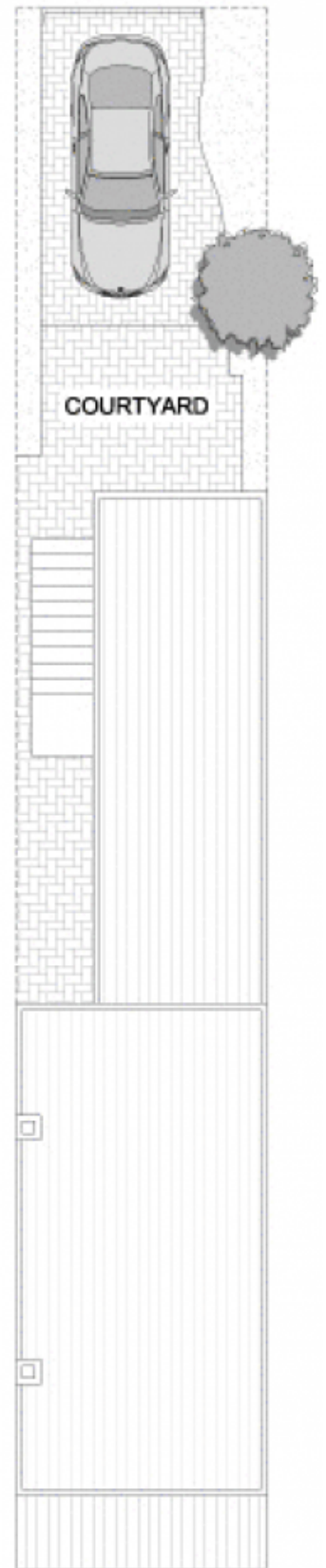


LEVEL 1



LEVEL 2

Gottenham Lane



TALFOURD STREET



7 TALFOURD STREET

GLEBE

PLANS SHOWN ARE ONLY INDICATIVE OF LAYOUT.
DIMENSIONS ARE APPROXIMATE

0 1 3
SCALE BAR in metres



METRO FLOORPLANS
0418 223 433



Garry White

FIRST NATIONAL REAL ESTATE