

23 Piper Street ANNANDALE NSW

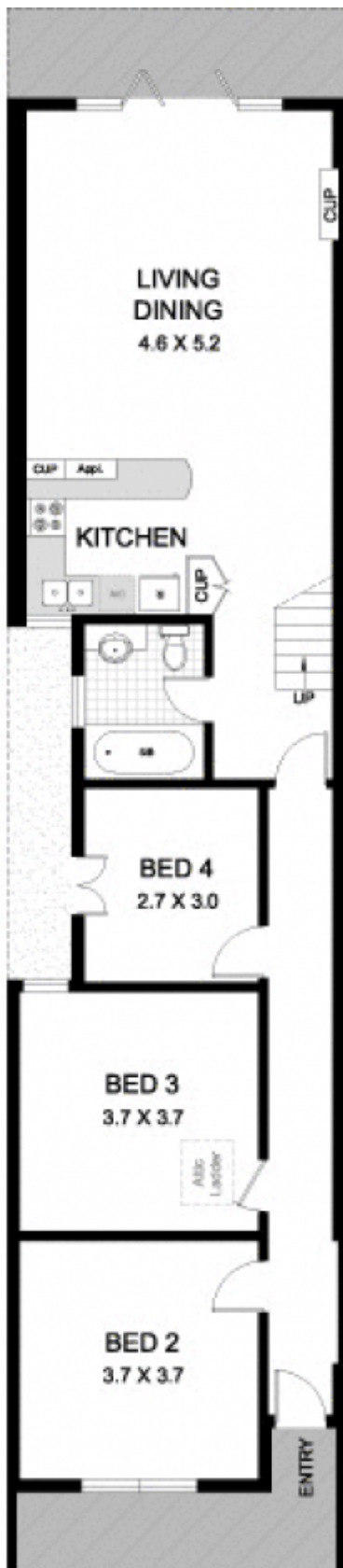
4 🏠 2 🚗 1 🚗

Wonderfully spacious and light filled, this Victorian style residence showcases a sleek modern open plan of unique character features and tranquil outdoor entertaining areas across a dual level floorplan. The peaceful property is desirably placed within strolling distance to local schools, shopping, dining and transport.

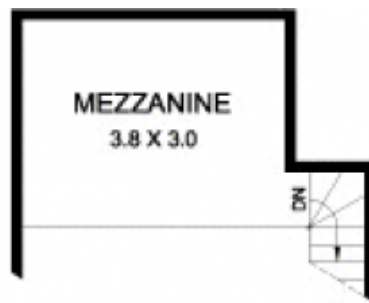
Type : House
Land Size : 190 sqm
View : <https://www.gwre.com.au/8065497>

- Thoughtfully revamped with quality finishes
- Lush landscaped gardens with established trees
- Open plan living/dining space flows to outdoors
- Private rear courtyard & entertaining space
- Sleek designer kitchen with superior gas cooking
- Ideal Northerly facing yard attracting all-day light
- Superbly located adjacent to parklands
- Rear lane access single garage plus wine cellar

[For full version visit the website](https://www.gwre.com.au)



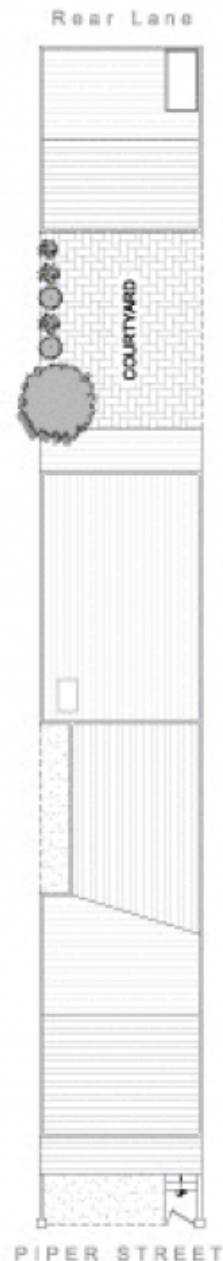
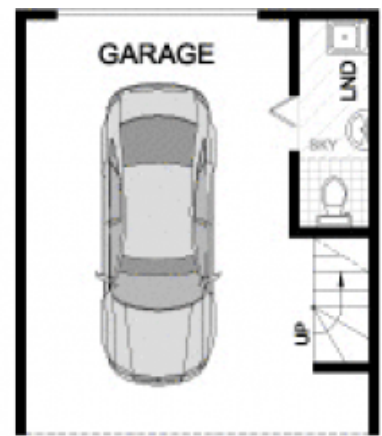
LEVEL 1



LEVEL 2 (Rear)



LEVEL 2 (Front)



23 PIPER STREET

ANNANDALE

PLANS SHOWN ARE ONLY INDICATIVE OF LAYOUT.
DIMENSIONS ARE APPROXIMATE



METRO FLOORPLANS
0418 223 433



Garry White
FIRST NATIONAL REAL ESTATE