



7 Colbourne Avenue GLEBE NSW

3 1

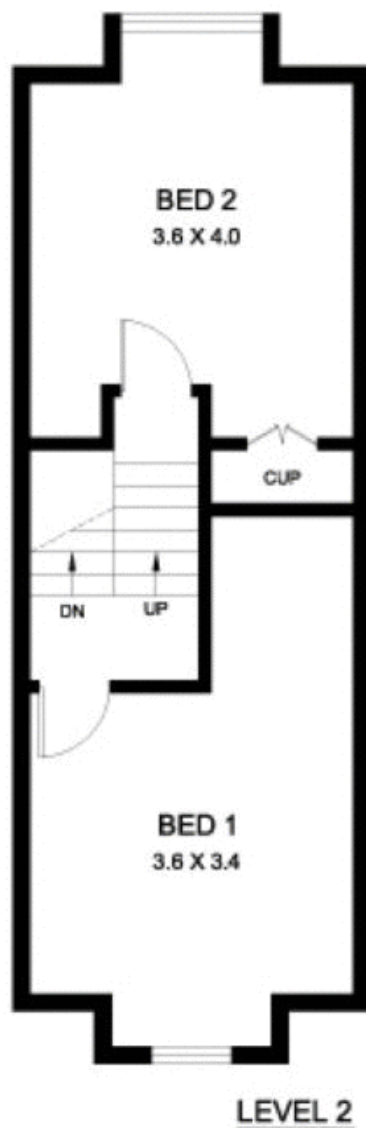
This pretty Victorian home is quietly positioned on a broad tree-lined street, in the heart of Glebe, and is being offered for the first time in 40 years.

Type : House
Land Size : 116 sqm
View : <https://www.gwre.com.au/8065481>

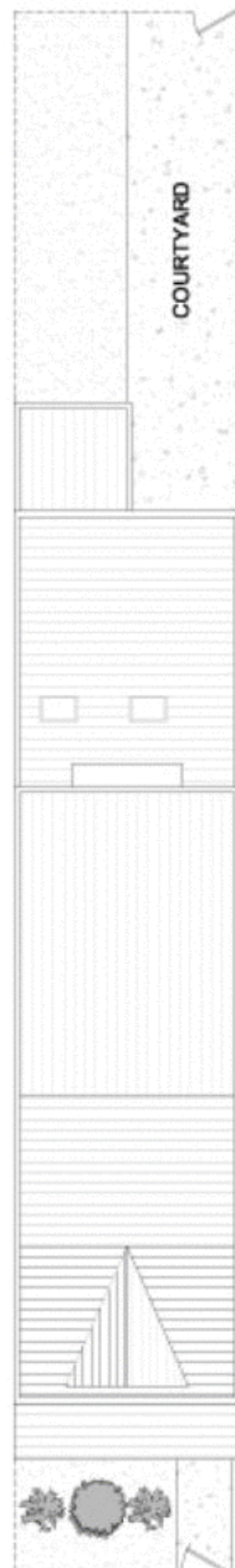
- Three amperly portioned bedrooms, Recently updated kitchen
- Light-filled archways seperate living and dining areas
- Private north-easterly courtyard with possible rear lane access
- Immediately liveable with fantastic opportunity to modernise
- City fringe locale, walk to CBD, light rail & Glebe Village



LEVEL 1



Broughton Street



COLBOURNE AVENUE



7 COLBOURNE AVENUE

GLEBE

PLANS SHOWN ARE ONLY INDICATIVE OF LAYOUT.
DIMENSIONS ARE APPROXIMATE

0 1 3
SCALE BAR in metres



METRO FLOORPLANS
0418 223 433



Garry White
FIRST NATIONAL REAL ESTATE