

218 Hereford Street FOREST LODGE NSW

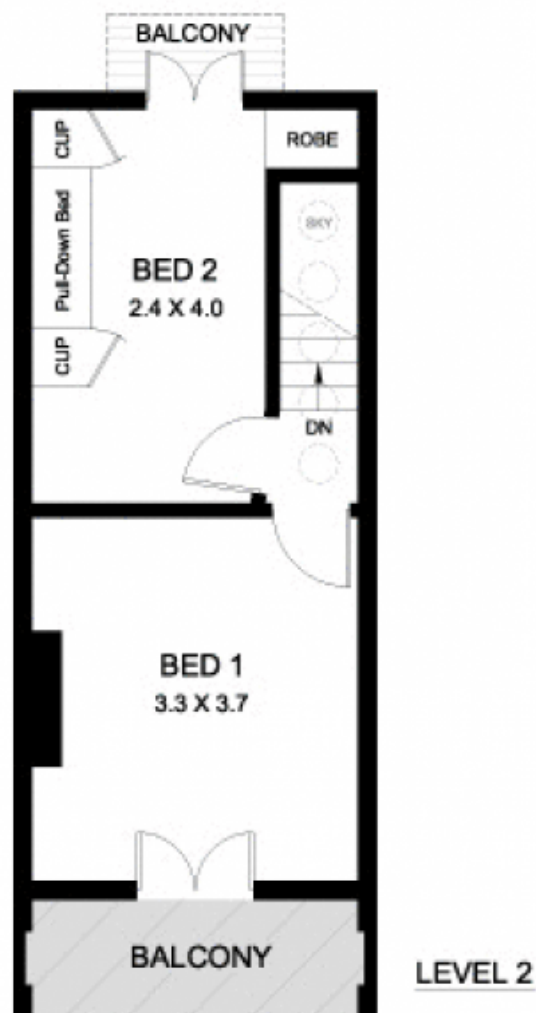
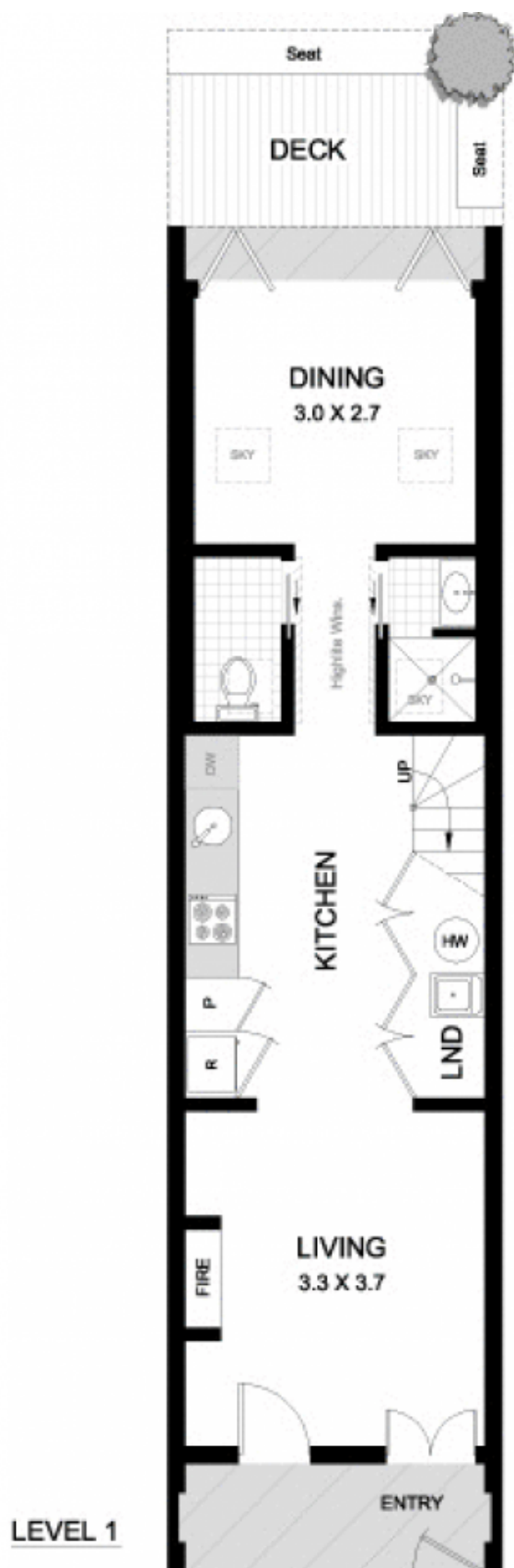
2  1 

Peacefully tucked away in one of the area's most sought after streets, this light-filled Victorian terrace has been beautifully refurbished to suit modern living. Fully renovated and architecturally enhanced to maximise light, space and open plan living, this two storey terrace displays an elegant modern touch. With an abundance of natural light, this stylish end terrace is immaculately presented in a serene surrounding. Secure leafy street with easy access to Sydney University and CBD. Leisurely walk to shops, cafes, buses, schools and waterside parklands in a premier lifestyle location.

Type : House
Price : \$ 710,000
Land Size : 59 sqm
View : <https://www.gwre.com.au/8065477>

- Separate lounge and dining with polished timber floors
- Dining area opens to private rear courtyard with sunlit entertaining area

[For full version visit the website](https://www.gwre.com.au)



218 HEREFORD STREET FOREST LODGE

PLANS SHOWN ARE ONLY INDICATIVE OF LAYOUT.
DIMENSIONS ARE APPROXIMATE

0 1 3
SCALE BAR in metres



METRO FLOORPLANS
0418 223 433



Garry White
FIRST NATIONAL REAL ESTATE