

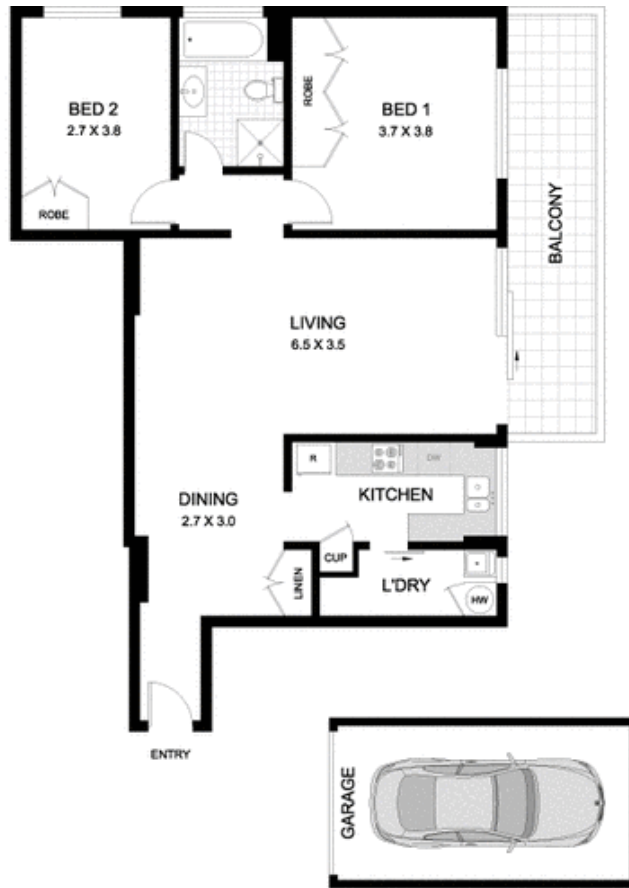
**19/2 Forsyth Street GLEBE NSW**

2  1  1 

Basking in stunning views looking beyond the Anzac Bridge to Pyrmont, this flawlessly renovated apartment embraces space, natural light and alfresco living to create a home of immense appeal.

**Type** : Apartment  
**Building Size** : 109 sqm  
**View** : <https://www.gwre.com.au/8065467>

- L-shaped open plan leading to a sunlit balcony
- Fresh, modern kitchen with stainless steel fittings
- 2 double bedrooms both with built-in wardrobes
- Designer bath with tub, internal laundry, lift access
- Metres to boutique eateries and public transport



19/2 FORSYTH STREET GLEBE

PLEASE NOTE: THIS IS ONLY AN APPROXIMATE REPRESENTATION OF THE PROPERTY. DIMENSIONS ARE APPROXIMATE. SCALE BAR IN METERS

METRO FLOORPLANS  
0418 223 433

