



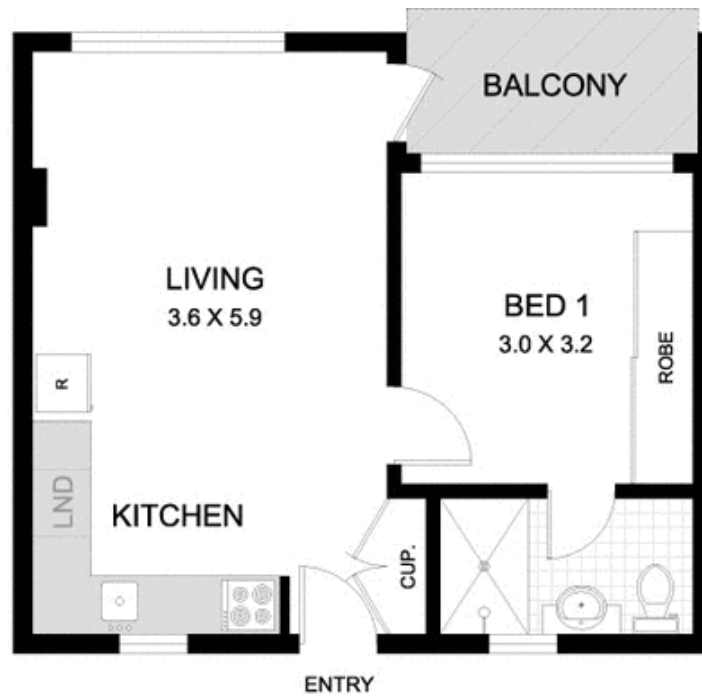
610/34 Wentworth Street GLEBE NSW

1 1

Enjoy an easy care lifestyle in this recently revised, conveniently located, one bedroom apartment. Situated on the 6th floor of a commanding complex enables striking views of Sydney's City lights.

Type : Apartment
Building Size : 39 sqm
View : <https://www.gwre.com.au/8065456>

- Bright open plan, Sunlit north facing balcony
- Views from living area and bedroom
- Refurbished apartment - every room upgraded
- Crisp new kitchen Smeg appliances, internal laundry
- Timber floors, built in wardrobes, re-tiled bathroom
- Moments to Broadway, City Centre & Sydney Uni



610/34 WENTWORTH STREET GLEBE

PLANS SHOWN ARE ONLY INDICATIVE OF LAYOUT.
DIMENSIONS ARE APPROXIMATE.

0 1 2
SCALE BAR in metres

 METRO FLOORPLANS
0418 223 433

