



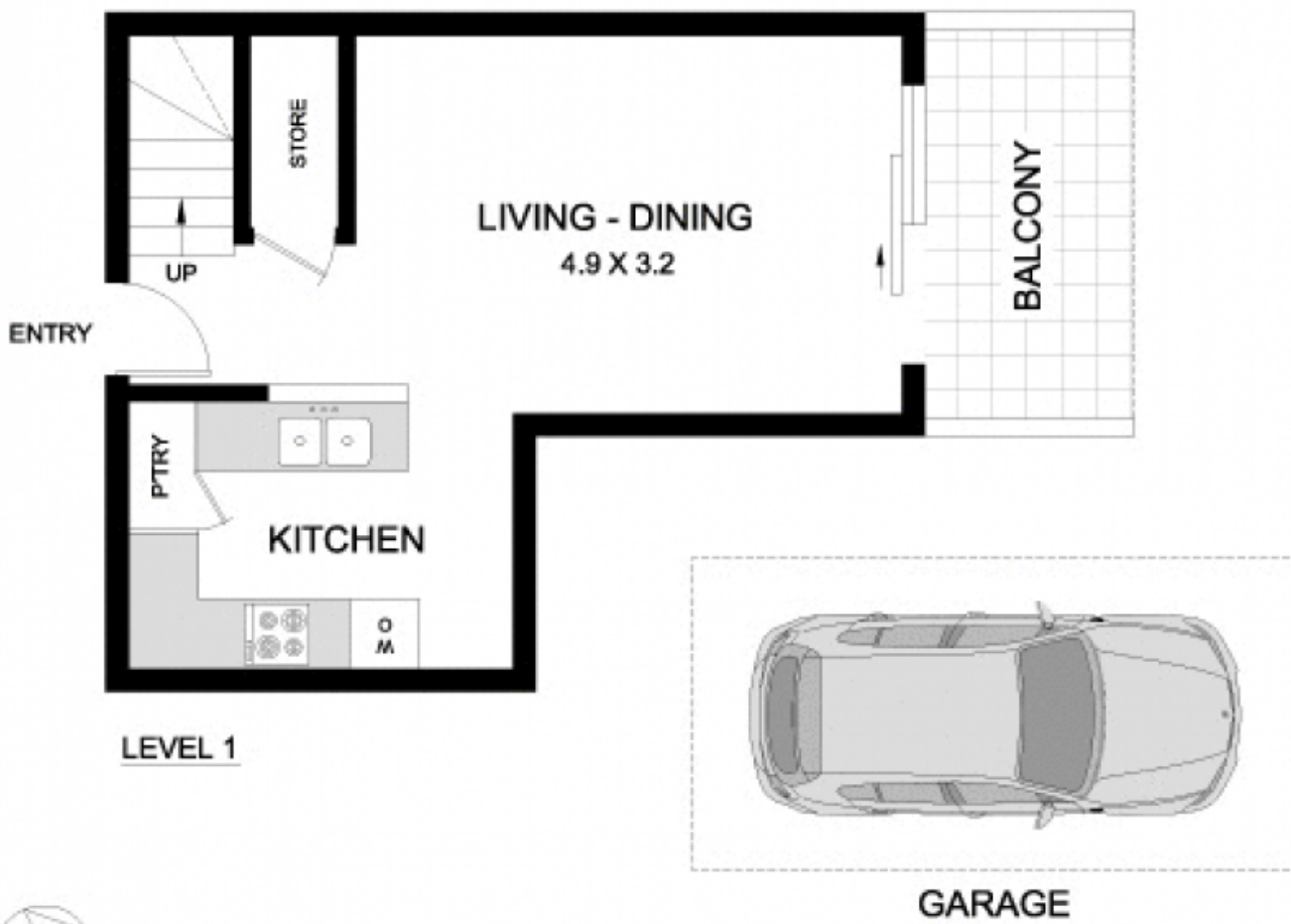
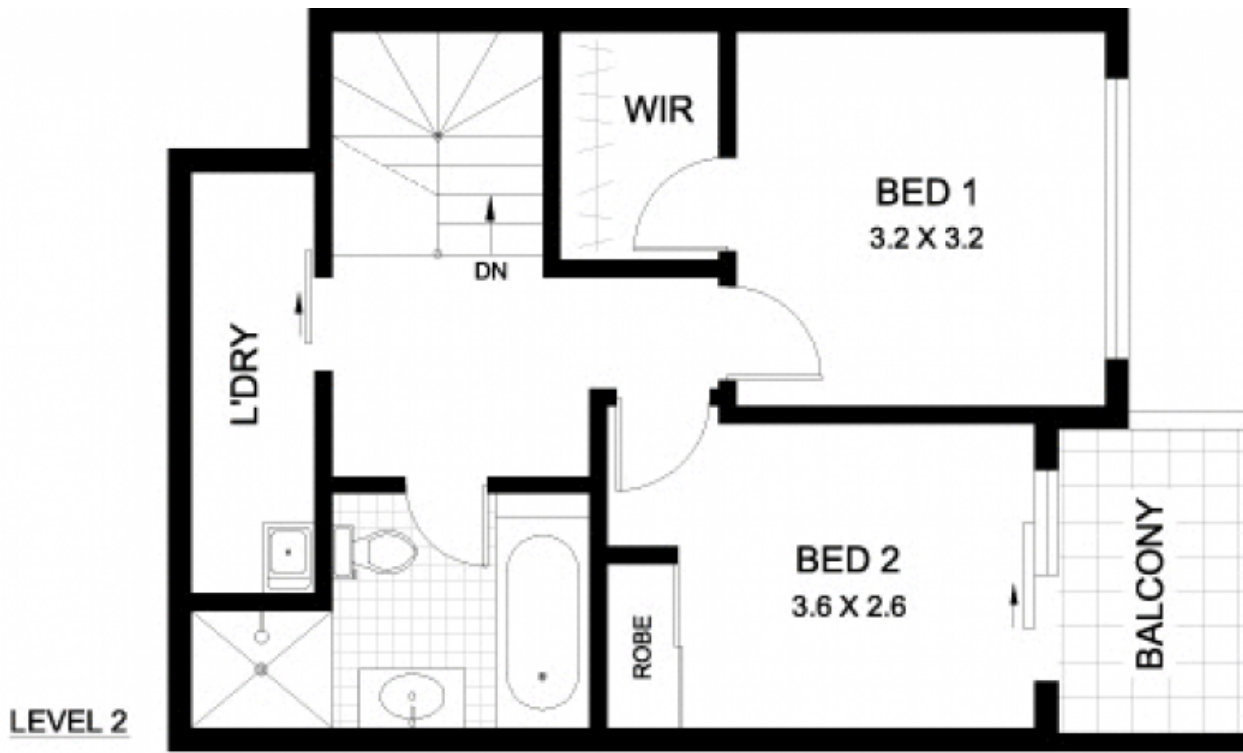
101/267 Bulwara Road ULTIMO NSW

2  1  1 

Positioned in a location renowned for its excellent convenience with the best that Sydney has to offer within walking distance, this dual level apartment holds enormous lifestyle appeal. Bright interiors, functional layout and good privacy combine to make it a great prospect with future scope to update and add value.

Type : Apartment
Building Size : 96 sqm
View : <https://www.gwre.com.au/8065407>

Combined living/dining flowing to sunny balcony
Double bedrooms include one with walk-in robe
Secure basement garage & intercom entrance
A simple interior makeover will add instant value
Great investment with solid growth & rental prospects
Stroll to parks, shops, cafes, light rail and the CBD



101/267 BULWARA ROAD

ULTIMO

PLANS SHOWN ARE ONLY INDICATIVE OF LAYOUT.
DIMENSIONS ARE APPROXIMATE



METRO FLOORPLANS
0418 223 433