



111 St Johns Road GLEBE NSW

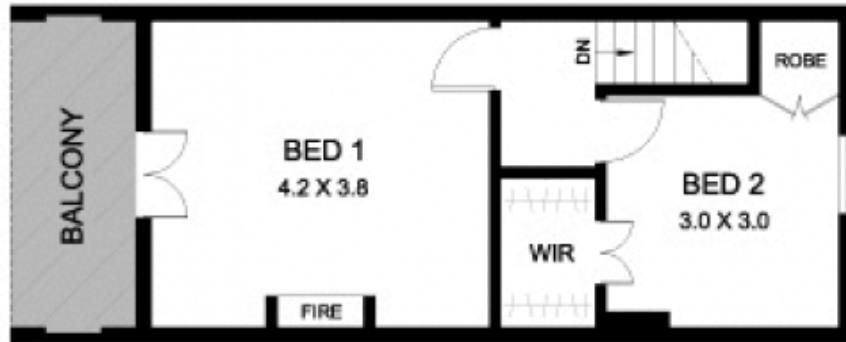
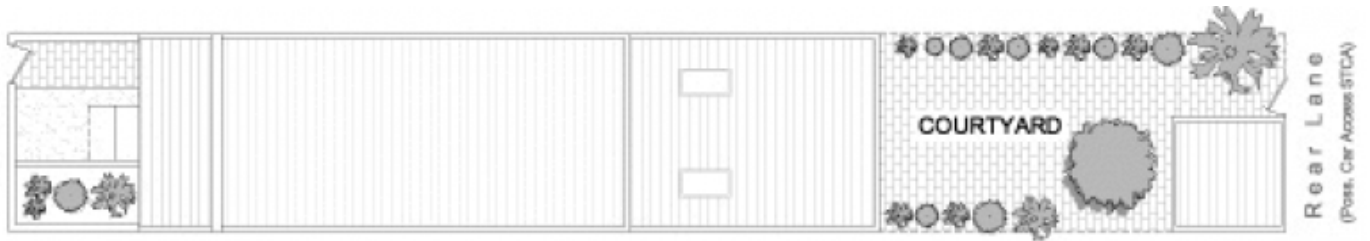
3  **1** 

Perfectly situated just a short walk to Glebe's shops and boutique cafes, this tri-level Victorian terrace presents an affordable prospect full of untapped potential in a desirable village setting. Its period features, versatile interiors and private entertainers' courtyard provide the perfect backdrop for an elegant contemporary renovation.

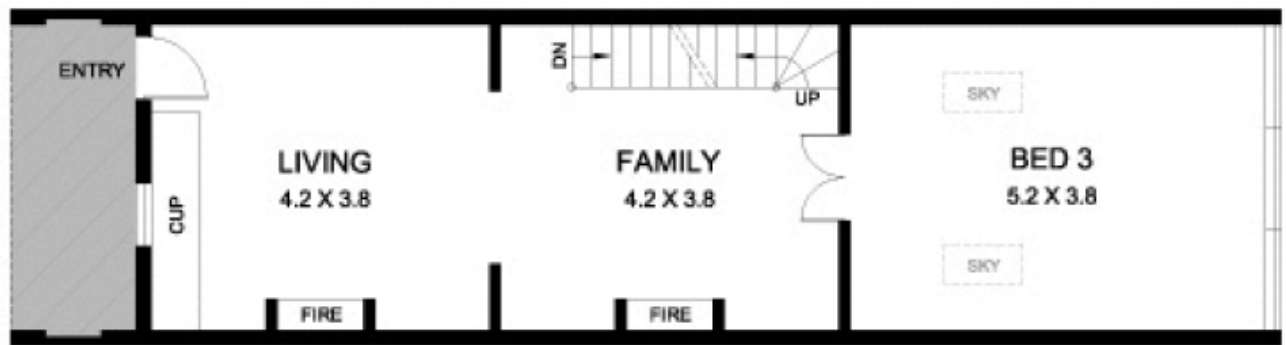
Type : House
Land Size : 123 sqm
View : <https://www.gwre.com.au/8065397>

- Spacious formal living and dining with high ceilings
- North facing courtyard ideal for summer barbecues
- Good sized original kitchen plus casual dining room
- Three bedrooms include large master with balcony
- Period fireplaces, ceiling roses and timber floors
- Potential rear lane access off street parking (STCA)
- Close to city buses, restaurants and local schools

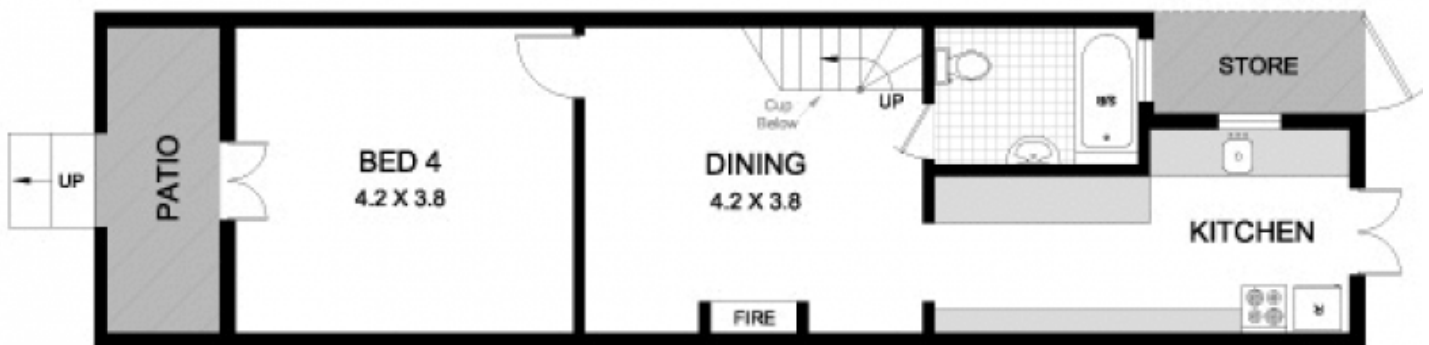
ST JOHNS ROAD



UPPER LEVEL



ENTRY LEVEL



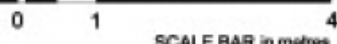
LOWER LEVEL



111 ST JOHNS ROAD

GLEBE

PLANS SHOWN ARE ONLY INDICATIVE OF LAYOUT.
DIMENSIONS ARE APPROXIMATE



METRO FLOORPLANS
0418 223 433