



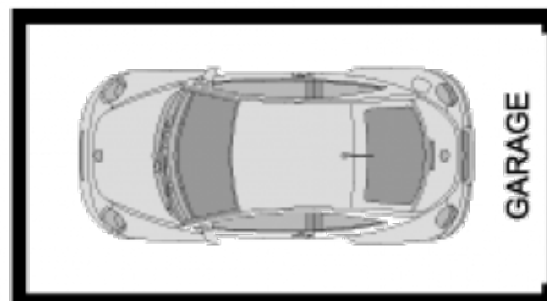
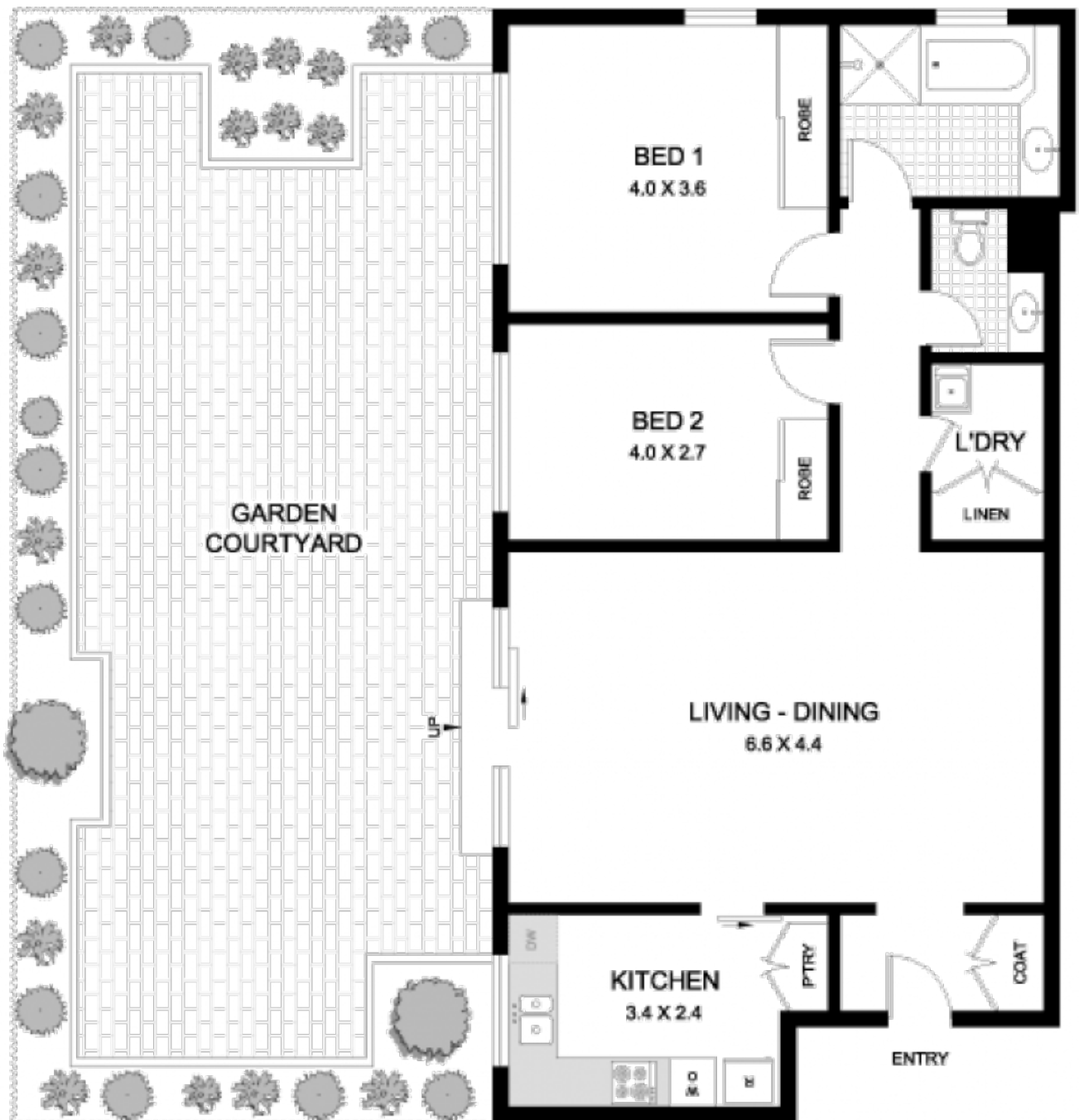
44/215 Bridge Road GLEBE NSW

2  **1**  **1** 

In an intimate, sundrenched and private setting surrounded by established gardens, this refreshingly spacious ground floor apartment enjoys leafy outlooks from every aspect over a 73sqm court garden and is only moments from a choice of shops, fine schools and excellent transport.

Type	: Apartment
Price	: \$ 685,000
Building Size	: 178 sqm
View	: https://www.gwre.com.au/8065394

Generous living extends to a court garden
Double bedrooms with full length windows
Floating timber floors throughout
Large kitchen with good appliances & storage
Split bathroom includes bath, separate laundry
Internal access to a basement single LUG
Metres to boutique eateries and public transport



44/215 BRIDGE ROAD

GLEBE

PLANS SHOWN ARE ONLY INDICATIVE OF LAYOUT.
DIMENSIONS ARE APPROXIMATE

0 1 3
SCALE BAR in metres



METRO FLOORPLANS
0418 223 433



Garry White
FIRST NATIONAL REAL ESTATE