



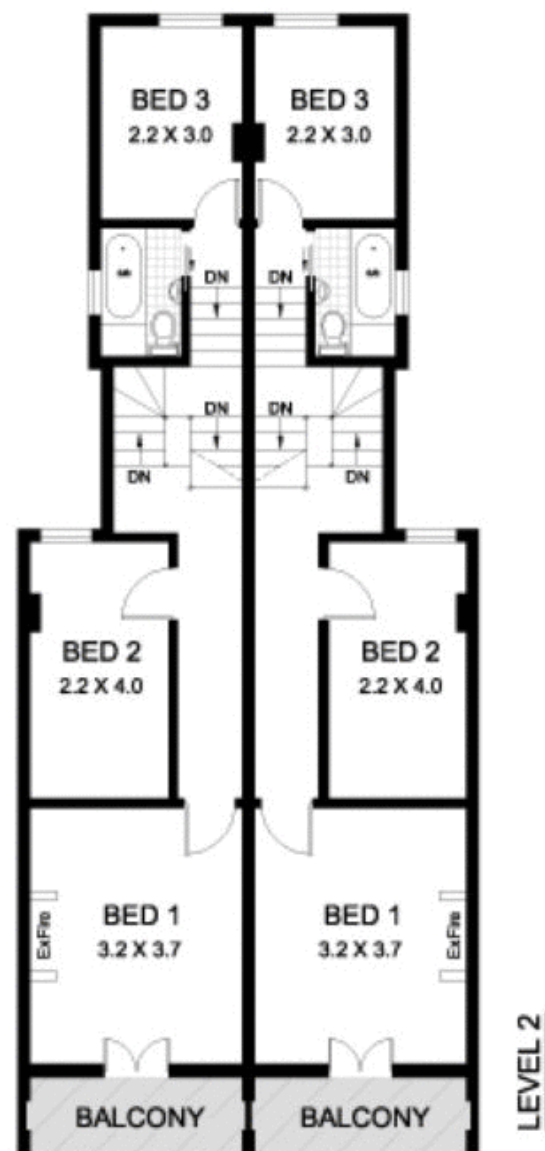
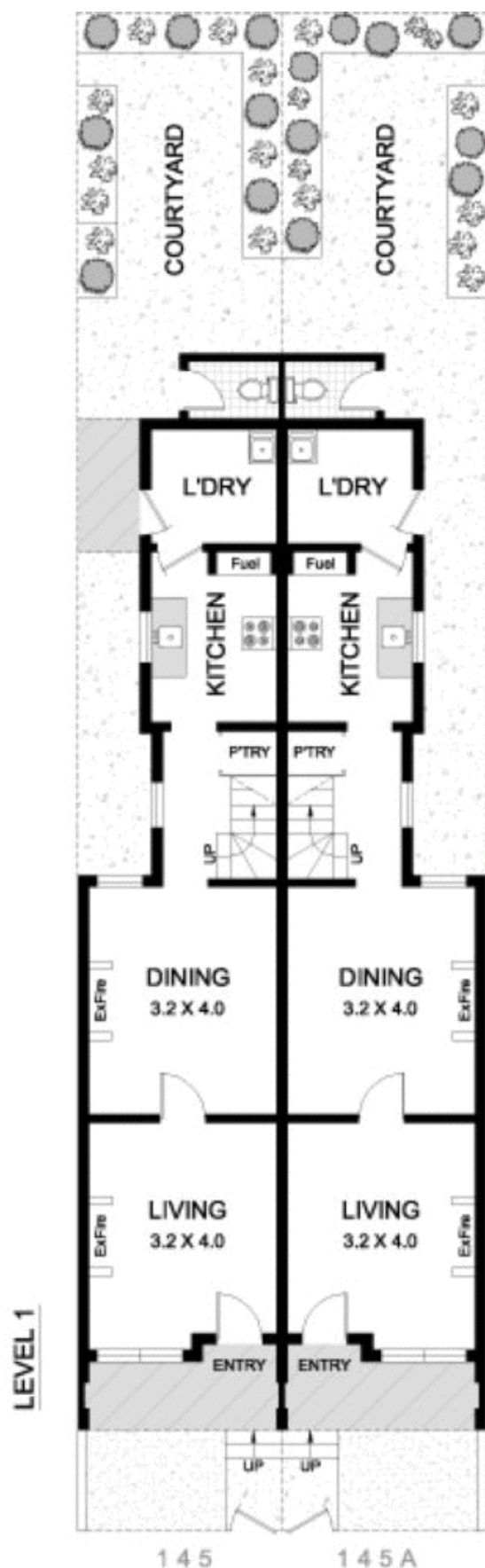
### 145 & 145A Lawson Street REDFERN NSW

6  2 

An unrivalled opportunity exists to secure two 2 storey 3 bedroom terrace houses located in the heart of the university precinct. These properties are ripe for renovation and subdivision [STCA] and offer a solid inner city property investment

- \*2 x 3 bedroom homes on one title
- \*Ultra convenient location
- \*First time offered in 40 years

**Type** : House  
**Land Size** : 196 sqm  
**View** : <https://www.gwre.com.au/8065388>



145 & 145A LAWSON STREET REDFERN

PLANS SHOWN ARE ONLY INDICATIVE OF LAYOUT.  
DIMENSIONS ARE APPROXIMATE

0 1 5  
SCALE BAR in metres



METRO FLOORPLANS  
0418 223 433



**Garry White**  
FIRST NATIONAL REAL ESTATE